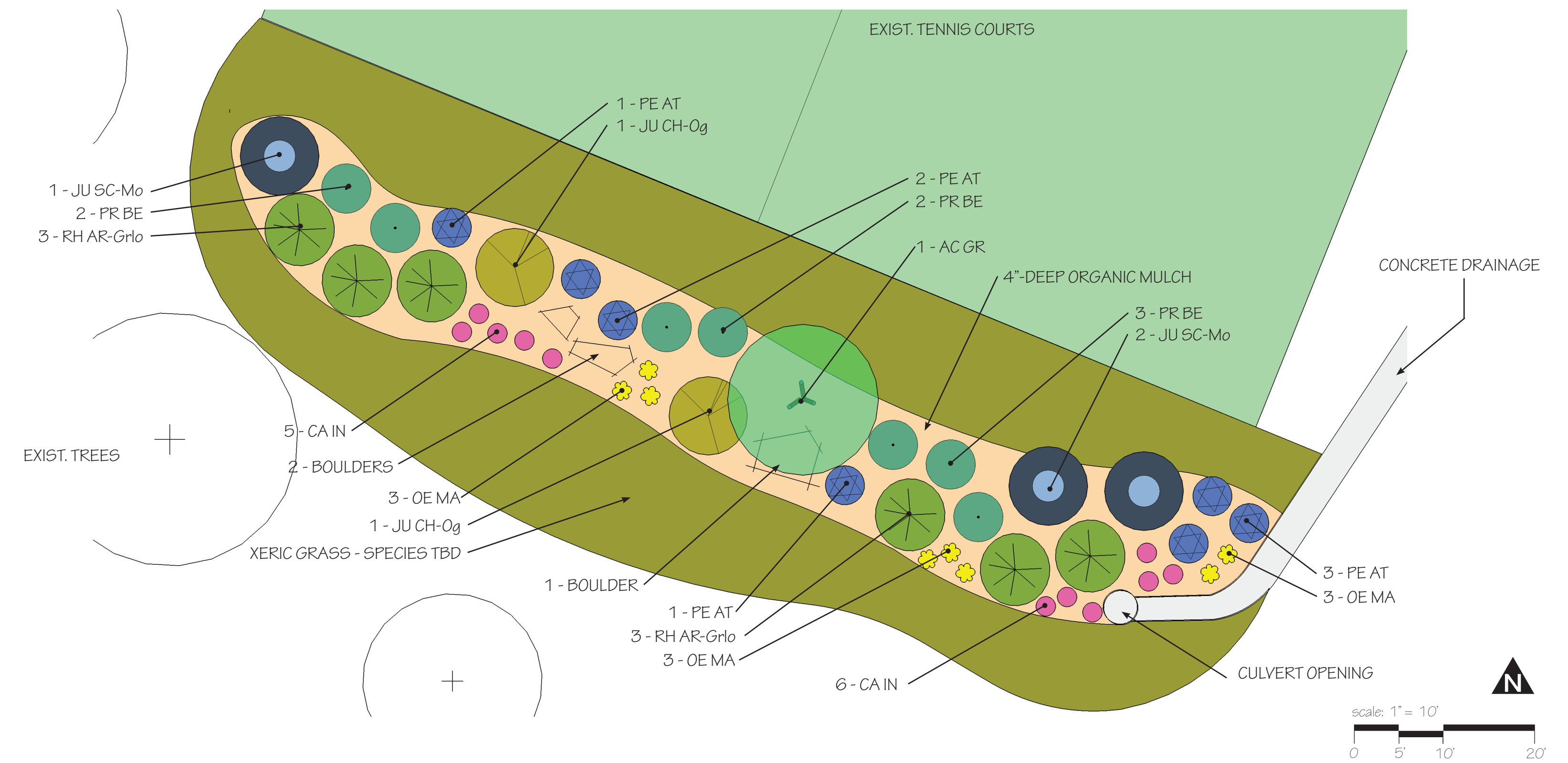
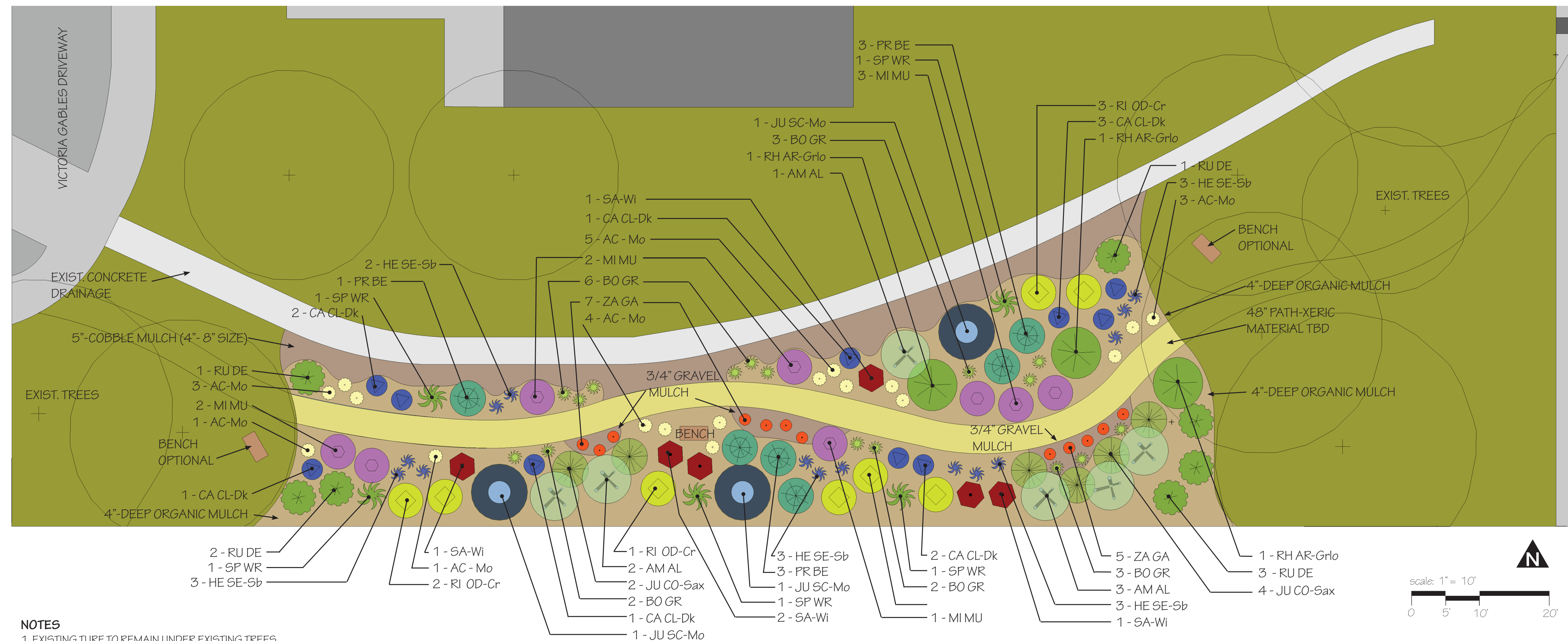


**A** VICTORIAN GABLES HOA - CATCH BASIN MASTER PLAN  
26 July 2020

Qty	Symbol	Botanical Name	Common Name	Water Needs	Size
<b>TREES</b>					
1	AC GR	<i>Acer grandidentatum</i>	Bigtooth Maple	L-VL	#10
3	JU SC-Mo	<i>Juniperus scopulorum</i> 'Moonglow'	Moonglow Juniper	L-VL	#10
<b>PERENNIALS</b>					
11	CA IN	<i>Callirhoe involucrata</i>	Winecups	L	#1
8	OE MA	<i>Oenothera macrocarpa</i>	Missouri Evening Primrose	L	#1
7	PE AT	<i>Perovskia atriplicifolia</i> & var.	Russian Sage	VL	#1
<b>SHRUBS</b>					
2	JU CH-Og	<i>Juniperus chinensis</i> 'Old Gold'	Old Gold Juniper	L-VL	#5
6	PR BE	<i>Prunus besseyi</i>	Western Sand Cherry	L	#1
6	RH AR-Grlo	<i>Rhus aromatica</i> 'Gro-Low'	Gro-Low Sumac	L	#1



**B** VICTORIAN GABLES HOA - XERIC WALKWAY MASTER PLAN  
7 AUGUST 2020



Qty	Symbol	Botanical Name	Common Name	Size	Water Needs
<b>TREES</b>					
3	JU SC-Mo	<i>Juniperus scopulorum</i> 'Moonglow'	Moonglow Juniper	#10	L-VL
<b>GRASSES</b>					
16	BO GR-BI	<i>Bouteloua gracilis</i> 'Blonde Ambition'	Blonde Ambition	#1	VL
15	HE SE-Sb	<i>Helictotrichon sempervirens</i> 'Sapphire Blue'	Sapphire Blue Oat Grass	#1	L-VL
6	SP WR	<i>Sporobolus wrightii</i>	Giant Sacaton Grass	#1	L-VL
<b>PERENNIALS</b>					
17	AC-Mo	<i>Achillea</i> 'Moonshine'	Moonshine Yarrow	#1	VL
8	MI MU	<i>Mirabilis multiflora</i>	Wild Four-O-Clock	#1	VL
7	SA-Wi	<i>Salvia</i> 'PWINO35'	Windwalker Royal red salvia	#1	L
12	ZA GA-Or	<i>Zauschneria garrettii</i>	Orange Carpet California Fuchsia	#2	L
<b>SHRUBS</b>					
6	AM AL	<i>Amelanchier alnifolia</i>	Saskatoon Serviceberry	#1	L
11	CA CL-Dk	<i>Caryopteris x clandonensis</i> 'Dark Knight'	Dark Knight Spirea	#1	L
8	JU CO-Sax	<i>Juniperus communis</i> var. <i>saxatilis</i>	Mtn Juniper, low shrub	#5	L
6	PR BE	<i>Prunus besseyi</i>	Western Sand Cherry	L	L
3	RH AR-Grlo	<i>Rhus aromatica</i> 'Gro-Low'	Gro-Low Sumac	L	L
8	RI OD-Cr	<i>Ribes odoratum</i> 'Crandall'	Crandall Clove Currant	#5	L
8	RU DE	<i>Rubus deliciosus</i> ( <i>Oreobatus deliciosus</i> )	Boulder Raspberry	#1	L

- NOTES**
- EXISTING TURF TO REMAIN UNDER EXISTING TREES
  - PATH - MATERIAL TBD.
  - 3\"-6\" STONE COBBLE TO LINE SOUTH SIDE OF CONCRETE DRAINAGE AREA - \*NO ORGANIC MATTER TO BE INSTALLED NEXT TO CONCRETE DRAINAGE.
  - 3/4\" GRAVEL MULCH AROUND ZAUSCHNERIA PLANTS ON SOUTH SIDE OF PATH.
  - IRRIGATION SHALL BE THE EXISTING OVERHEAD SPRINKLERS. TO BE USED DURING ESTABLISHMENT PERIOD AND THEN ON AS NEEDED BASIS.
  - WEED BARRIER MAY BE USED **ONLY** UNDERNEATH COBBLES THAT LINE THE CEMENT DRAINAGE - NONE TO BE USED ELSEWHERE.
  - MINOR CHANGES IN PLANT SPECIES AND LOCATIONS CAN BE MADE UPON APPROVAL BY HOA REPRESENTATIVE AND/OR THE CITY. ALL CHANGES MUST HAVE WRITTEN APPROVAL.